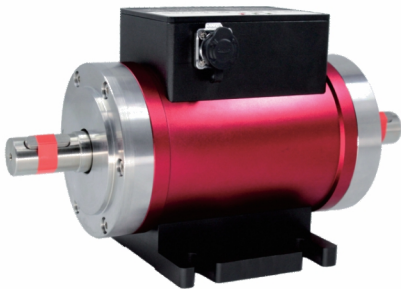


Delta Transducers

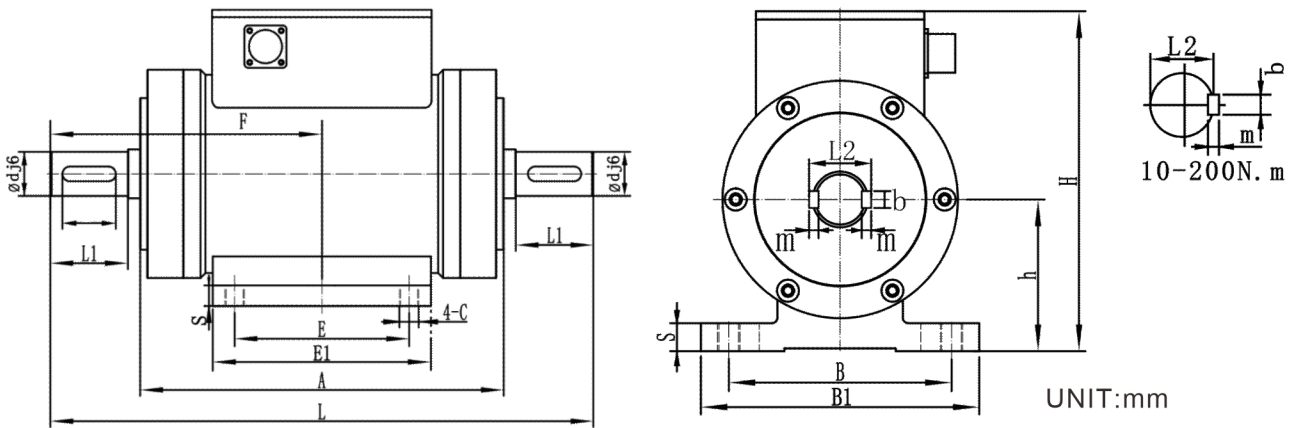
Model : ARI8-210



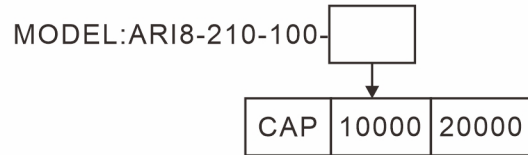
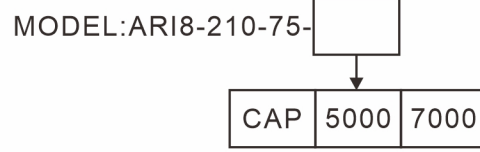
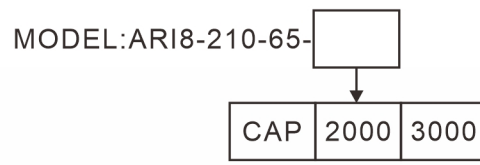
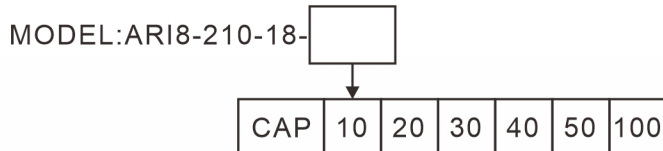
Features & Application

- ▲ Resistance strain is an integrated product composed of sensitive elements and integrated circuits.
- ▲ High precision, stable and reliable performance.
- ▲ High speed and long time operation.
- ▲ Output positive and reverse torque signal.
- ▲ Both ends are key connected.

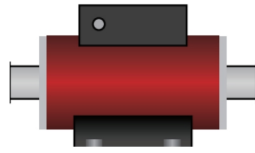
Mounting Dimension



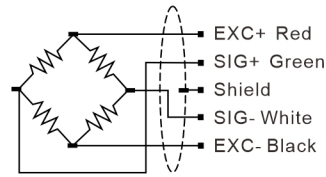
CAP(N.m)	∅dj6	∅D	A	L	L1	H	h	E	E1	B	B1	C	F	S
10,20,30,40,50,100	∅18	∅85	150	224	32	123	58	72	95	62	90	6.5	112	10
200,300	∅28	∅95	152	242	42	133	63	72	95	62	90	6.5	121	10
500,700	∅38	∅105	154	272	56	144	69	72	95	62	90	6.5	136	10
1000	∅48	∅115	156	328	82	150	70	72	95	82	110	8.5	165	12
2000,3000	∅65	∅132	165	385	105	172	80	72	95	82	110	8.5	192.5	12
5000,7000	∅75	∅146	180	396	105	187	89	72	95	82	120	8.5	210	12
10000,20000	∅100	∅182	180	447	130	244	122	80	110	112	140	10.5	230	15
50000	∅165	∅250	185	700	240	331	180	120	190	150	190	12.5	350	15
100000	∅210	∅330	200	820	300	410	210	160	200	250	290	12.5	410	15
150000	∅235	∅350	250	900	315	420	220	220	260	250	290	17	450	15
200000	∅255	∅360	210	900	320	446	240	220	260	250	290	17	450	15
300000	∅295	∅416	224	900	325	480	250	220	270	268	300	17	450	20



Load Direction



Wiring



Technical Parameters

Specifications	Technique
Capacity	10, 20, 30, 40, 50, 100, 200, 300, 500, 700, 1000 , 2000, 3000, 5000, 7000, 10000, 20000, 50000, 100000, 150000, 200000, 300000 N.m
Speed Signal	≤15000rpm
Speed Capacity	120/60/10 pulse/rev, 4-20mA, 0-20mA, 0-5V, 0-10V
Torque Signal	5-15kHz
Zero Balance	±2%F.S.
Non-linearity	0.1% F.S.
Hysteresis	0.5% F.S.
Non-repeatability	0.2% F.S.
Creep (30min)	0.03% F.S.
Temp Effect On Output	0.01% F.S. / 10°C
Temp Effect On Zero	0.01% F.S. / 10°C
Response Time	0.6ms(50% Reaction)
Response Frequency	1kHz
Maximum torsion angle	2.60X10rad(0.149°)
Moment of inertia	0.38kgcm
Natural frequency of rotor vibration	19.4kHz
Torsion constant	3.85x10Nm/rad
Load Resistance	>2000MΩ
Working voltage	DC 24V 0.2A
Current Consumption	<200mA
Operating Temp.	-10~50°C 0~85%RH
Safe Overload	200%
Cable	Ø5 X 3m